



**UniCon
Software
GmbH**

eLux - embedded Linux mit SAP®GUI for the Java environment

eLux

eLux is a Linux distribution with special features for embedded systems. The file system on an integrated flash memory is write-protected, so that after a power failure or even if aborted during operation the system is restarted without having to check the file system.

The hardware platform is the Scovery xS produced by Fujitsu Siemens. All required drivers to support the hardware are already integrated into the well-proven and reliable Linux-Kernel 2.2.14. The simple desktop can be handled intuitively. You do not need any Linux know-how to use the integrated applications.

Scovery xS with eLux

With eLux the Scovery's become intelligent, multi-functional terminals and slim network computers, especially suitable in large networks with client-server structures. They are less expensive and much more secure than PCs.

Windows Based Terminal

Scovery xS may be used as an ICA-Client or as a RDP-Client. Each Windows application can be displayed on the client, however, it needs to be installed on the Windows terminal server only. All terminal servers based on Windows NT V4.0 and Windows 2000 servers are supported.

WEB Station

Moreover, the Scovery enables the access to Intra- and Internet via Netscape Communicator as well as to Java applications.

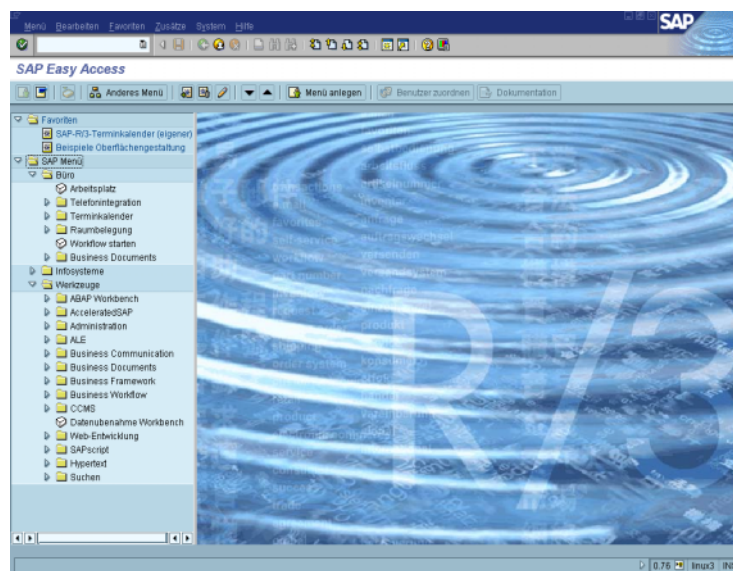
SAP/R3 Terminal

With the SAP®GUI for the Java environment on eLux the Scovery xS provides a fully functional SAP terminal, which may be connected to each SAP/R3 application server. You may choose between a Classic Style Desktop and a New Visual Design surface. Even diagram graphics is completely supported.

There is direct connection to the host application without any tiers, which increases the availability of the essential applications.

Central Management

The versatility and the great deal of functions require to customize the configuration to the individual needs of the end user. In large networks with many clients central management is a main topic. UniCon offers you a perfect central management tool, so your system administrator will not become an errand-boy.



No browser is needed for operation, since it is based on the locally installed JVM.

Terminal Replacement

The comfortable terminal emulations of type 9750, 97801, 3270, 5250, VT220 and X11 are integrated in the flash memory and thus replace old terminals 1:1.

Advantages

Time and costs for administration are kept low for the maximum benefit of client-server computing. All you have to do is to install Scout on a server.



**UniCon
Software
GmbH**

eLux - embedded Linux

Individual composition of the flash image

The Image Builder allows the administrator to select just the applications needed on the client. A graphic tool allows you to design the flash memory image by mouse click. Packages and features as well as their inter-dependencies are automatically checked, thus guaranteeing that neither incompatibilities nor disturbances arise. A downgrade

SmartCard Support

By option, the Scovery xS can be delivered with a SmartCard Reader. Combined with the eLux user management this device increases the access protection of the client. On top, the management tool Scout enables User Roaming. The user thus finds his settings and environment on every Scovery xS.

Network Management

eLux supports DHCP, Bootp and fixed IP addresses, too. If it should occur, that the DHCP or the Bootp-Server are not accessible, after a timeout eLux uses the settings of the last successful connection. This is not only valid for IP addressing, but also for the individual user configuration.

eLux - Features

- Java Desktop
- Autostart Function
- SmartCard Support
- Factory Reset
- Flash Recovery
- Remote Management by Scout
- User Roaming with Scout
- Update via HTTP or FTP

eLux - Applications

- ICA Client, RDP Client
- Netscape Browser, Mail
- Terminal Emulation Suite

SAP®GUI- Features

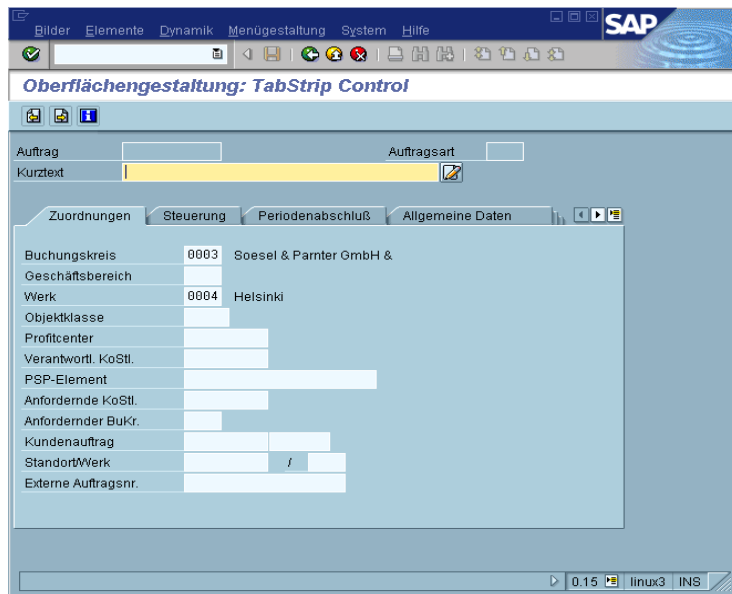
- New Visual Design
- Classic Style
- Graphic modules (5 levels)
- Support of 20 languages
- SAP end user support
- current version 4.6
- downward-compatible

SAP®GUI- Requirements

- at least 64 MB Flash memory
- at least 128 MB main memory

For further information please contact:

UniCon Software GmbH
Gerwigstraße 66b
76131 Karlsruhe
Tel.: 0721/ 96451 - 0
Fax: 0721/ 96451 - 43
e-mail: vertrieb@unicon-ka.de
www.unicon-ka.de



of the software can be done any time. During an update only the required packages are being installed. So the network traffic during the update is reduced to a minimum.

eLux - System Features

- Linux Kernel 2.2.14
- Java Virtual Machine 1.1.8 IBM
- Startup und Setup Java-GUI
- SNMP-Support
- Flash-Recovery by means of bootp of the EPROM on the network adapter
- Wake On LAN Support
- Support of network printers and local printers (Lineprinter, Postscript)
- Multimedia Support
- Support of the network drive with smb and nfs-protocol