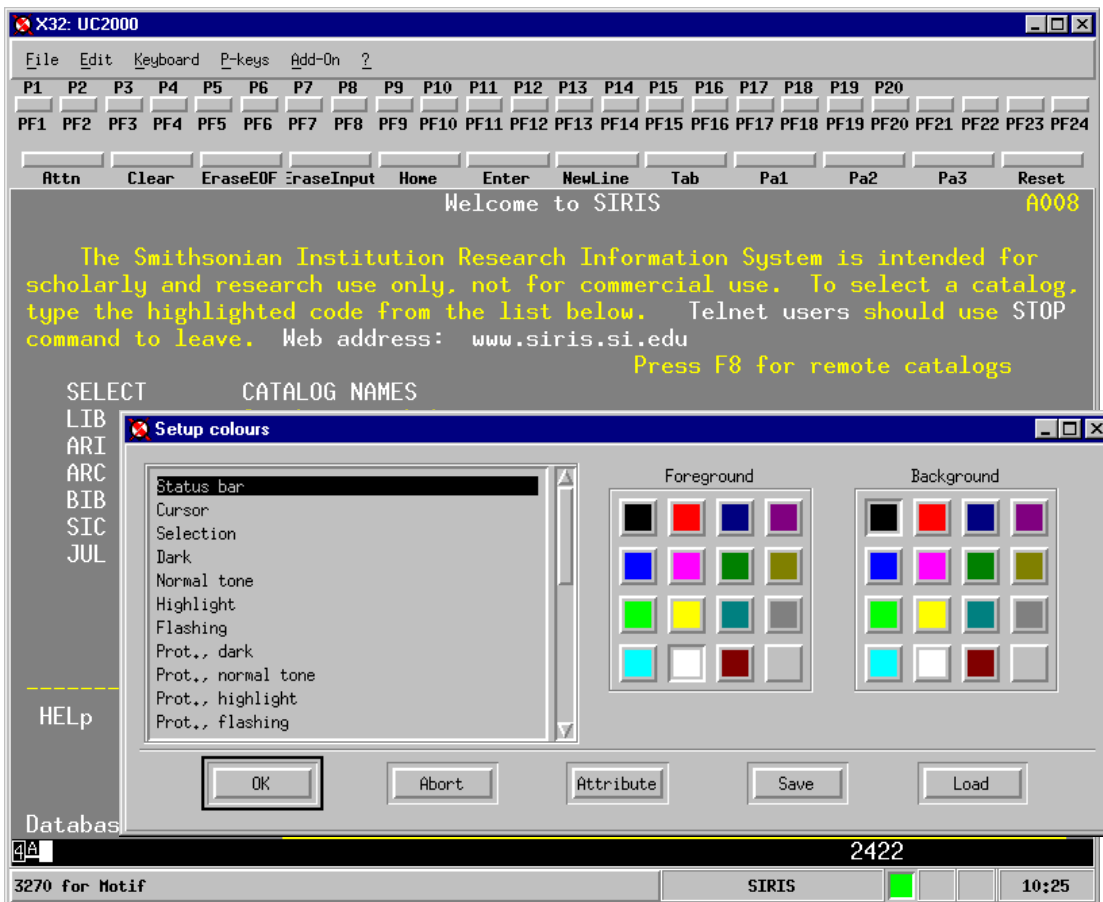


# X32/X52 - 3270/5250 Emulation for eLux

## The new, user-friendly 3270/5250 Emulation for eLux

All those using a Thin Client with eLux as a multifunctional terminal can now enjoy the much more comfortable and easy access to the IBM-OS390 or IBM AS400 by the new X32/X52. The user guide has been optimized, the application simplified, whereas the proven concept of protocol independency remains. The fully graphically designed desktop offers the user a new dimension.

The emulation may be performed with 8 fonts differing in size, emulation screen and keyboard adapting to the applied font dynamically. Also, the colors may be configured by mouse click online and directly. Merely selecting the item on the emulation screen defines the color design. Thus the entire screen mask may be visually controlled any time. Each color set can be saved in files or loaded from files.



The function keys are displayed, so the user is shown all the application context keys being mapped from the original keyboard., just click on the keys directly. Without any further keyboard mapping you can choose the desired function from the great variety of 3270/5250 keys in no time.

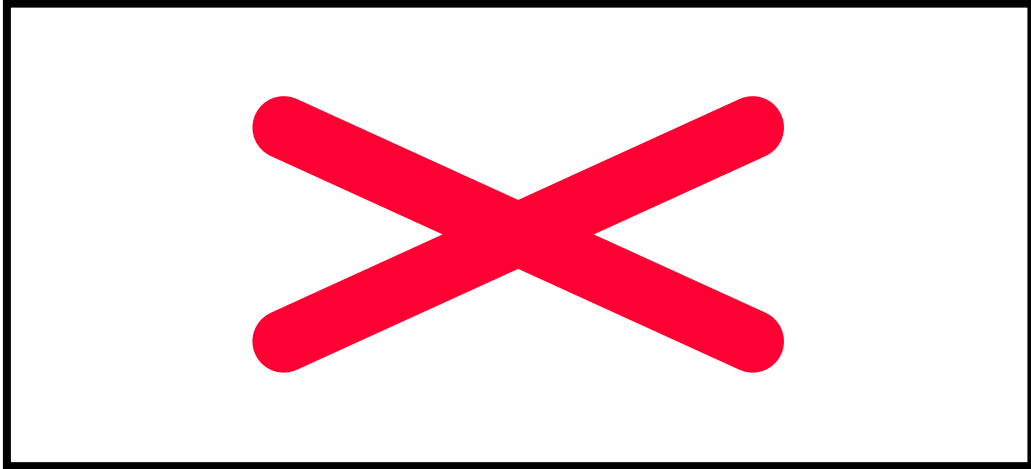
In addition, an integrated key editor allows the user to allocate his individual IBM function keys without having knowledge of the key codes. All key allocations can be saved in files and loaded from files.

Moreover, the lettering of the function keys of the appliance can be defined individually.

Further, each session may be saved in an individual configuration and be defined as a start parameter of the X32/X52. The user thus may store his personal emulation environment in his home directory and supply it to others if wanted.

Of course, the X32/X52 is available as eLux software package. The tool Scout eL allows you to install or update the software very easily.

## X32/X52 - 3270/5250 Emulation for eLux



The 'Cut and Paste' function may be used to move or copy the data selected by mouse operation directly from the 3270/5250 screen to other X applications.

All X32 resources can also be defined in the X resource file user-oriented. Thus, every

user is free to apply menus, colors, fonts and key lettering as to his/her liking. By menu, the language setting of the X32 may be switched either to German or English.

### Technical Details

#### Emulations:

The complete functionality of 3278/79 terminals, model 2 - 5 including EAB's is supported.

#### Additional Options:

- SCOVERY xS by Fujitsu Siemens Computers
- Linux, further on request

#### Supported Connection:

- TCP/IP (TN3270)
- MS-compatible SNA-Gateway