

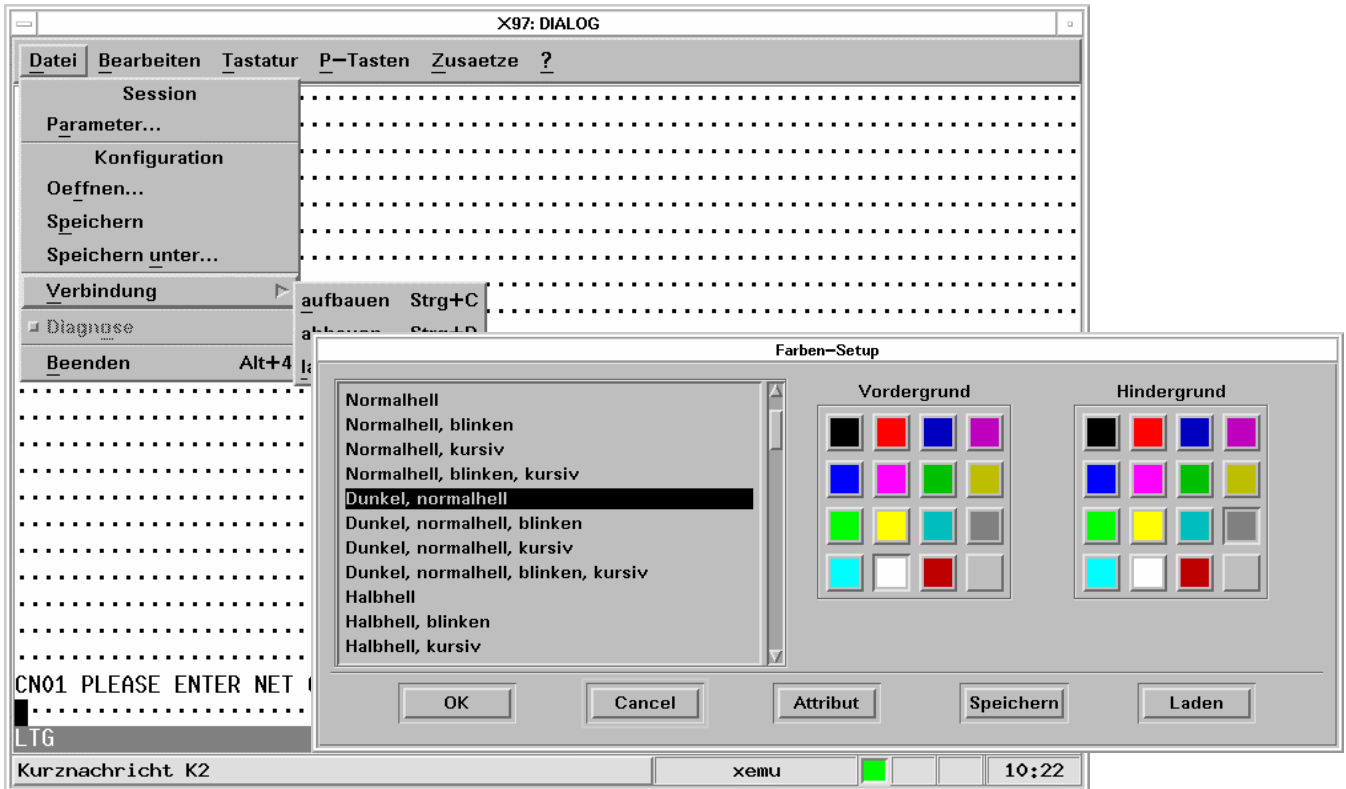
X97 - 9750 Emulation for eLux

The new, user-friendly 9750 Emulation for Thin Clients with eLux

All those using a Thin Client with eLux as a multifunctional terminal can now enjoy the much more comfortable and easy access to the BS2000 by the new X97.

The user guide has been optimized, the application simplified, whereas the proven concept

The emulation may be performed with 8 fonts differing in size, emulation screen and keyboard adapting to the applied font dynamically. Also, the colors may be configured by mouse click online and directly. Merely selecting the item on the emulation screen defines



of protocol independency remains. The fully graphically designed desktop offers the user a new dimension.

The function keys are displayed, so the user is shown all the application context keys being mapped from the original keyboard., just click on the keys directly. Without any further keyboard mapping you can choose the desired function from the great variety of Siemens keys in no time.

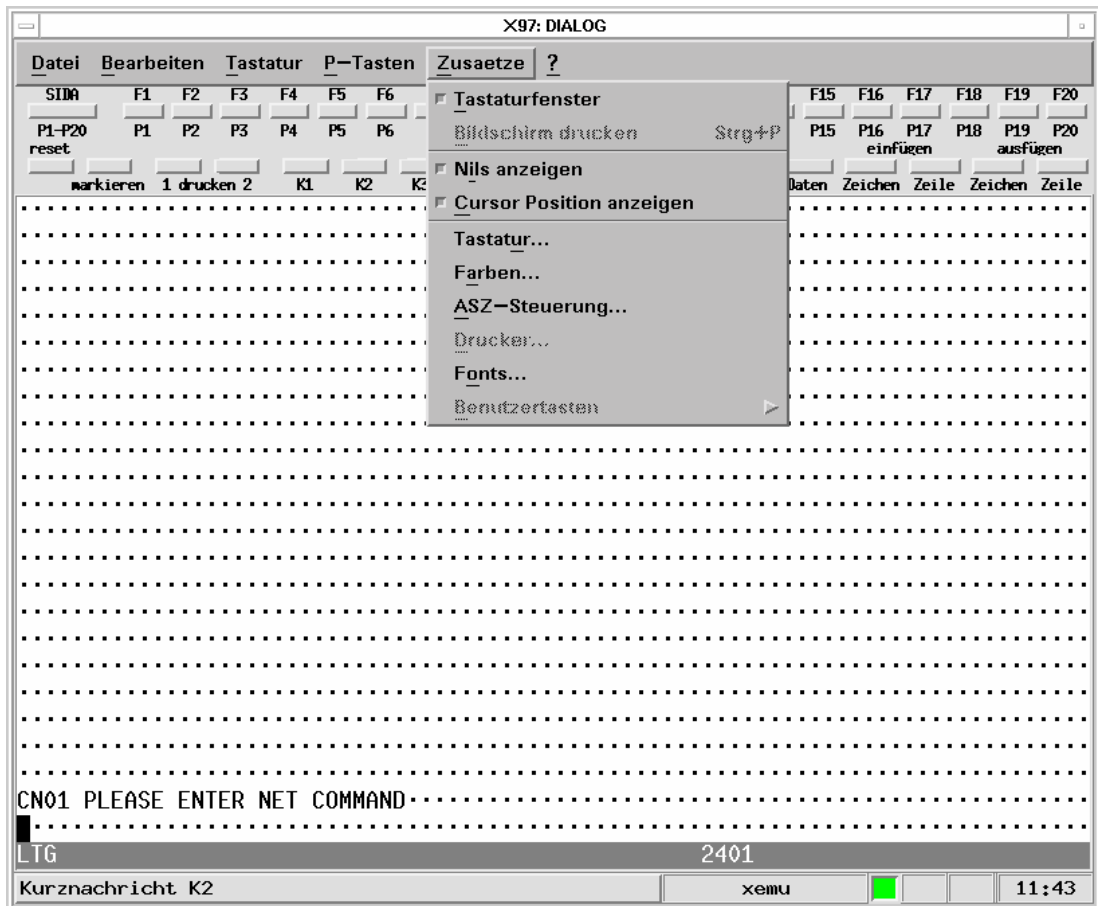
In addition, an integrated key editor allows the user to allocate his individual Siemens function keys without having knowledge of the key codes. All key allocations can be saved in files and loaded from files.

the color design. Thus the entire screen mask may be visually controlled any time. Each color set can be saved in files or loaded from files.

Further, each session may be saved in an individual configuration and be defined as a start parameter of the BS2000. The user thus may store his personal emulation environment in his home directory and supply it to others if wanted.

Moreover, the lettering of the function keys of the appliance can be defined individually.

The 'Cut and Paste' function may be used to move or copy the data selected by mouse operation directly from the BS2000 screen to other X applications.



All X97 resources can also be defined in the X resource file user-oriented. Thus, every user is free to apply menus, colors, fonts and key lettering as to his/her liking. By menu, the

language setting of the X97 may be switched either to German or English.

Of course, the X97 is available as eLux software package. The tool Scout eL allows you to install or update the software very easily

Technical Details

Emulations:

- SIEMENS terminals 9750, 9756, 9758, 9763
- SIEMENS color monitor 9752

Supported connection to BS2000:

- TCP/IP (RFC1006)
- BS2000-applications and Unix-applications

Supported platforms:

- SCOVERY xS by Fujitsu Siemens Computers
- Linux, further on request